

# EXS 220

## Centrifugal fan for quiet cooling

### Technical Specifications

#### EXS 220

Airflow @ 80Pa	Industry standard	9140 m <sup>3</sup> /h 5380 cfm
Cooling capacity*	kW	15.1
Power consumption (total)	Watts max	1860
	Current max (amp)	9.0
Power supply	Voltage / Phases / Hz	220-240 / 1 / 50
Controller	Type	Digital
Fan	Type	Centrifugal
	Dia x width (mm)	460 x 380
Motor	Type	Centrifugal
	Speed max (rpm)	680 VAR
	Output Watts max	1500
	Overload	Auto reset
	Enclosure	IP2X
Pump	Type	Centrifugal
	Motor	Synchronous
	Rating Watts (input)	25
	Flow rate (L/min)	21
	Voltage / Phases / Hz	230 / 1 / 50
	Overload	Auto reset
	Enclosure rating	IPX4
Cooling pad Chillcel	Size (mm)	850 x 635 (H) x 120 (4 pads)
	Pad area (m <sup>2</sup> )	2.03
Water	Tank capacity (L)	11
	Inlet (mm / inches)	12.7 / ½ male BSP
	Drain (mm / inches)	40 / 1½ male BSP
Shipping	Dimensions including pallet (mm)	1160 x 1160 x 955 (H)
	Volume (m <sup>3</sup> )	1.29
	Mass (kg)	87
	Operating (kg)	94
Connecting duct (raw edged)	Length x width (mm)	550 x 550

\*Cooling capacity measured to Australian Standard AS2913-2000, ambient of 38°C dry bulb & 21°C wet bulb, with room exit temperature of 27.4°C.

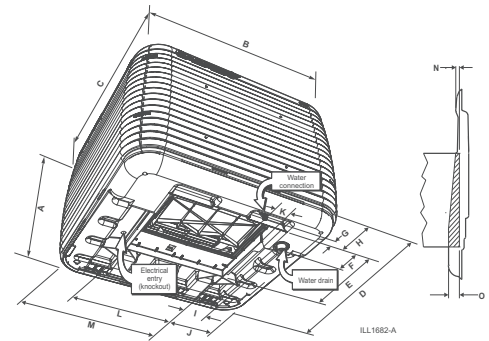
### Cooler Discharge Air Temperature Chart

		Ambient Relative Humidity %								
		10	20	30	40	50	60	70	80	90
Ambient Dry Bulb Temperature °C	10	2.3	3.3	4.2	5.1	6.0	6.8	7.7	8.5	9.2
	15	5.6	6.9	8.0	9.1	10.2	11.2	12.2	13.2	14.1
	20	8.8	10.3	11.8	13.1	14.4	15.6	16.8	18.0	19.0
	25	11.9	13.8	15.5	17.1	18.6	20.0	21.4	22.6	23.9
	30	14.9	17.2	19.2	21.1	22.8	24.4	26.0	27.4	28.7
	35	17.9	20.5	22.9	25.1	27.1	28.9	30.6	32.1	33.6
	40	20.8	23.9	26.6	29.1	31.3	33.3	35.2	36.9	38.5
	45	23.6	27.2	30.4	33.1	35.6	37.8	39.8	41.7	43.4
	50	26.5	30.6	34.2	37.2	39.9	42.3	44.5	46.5	48.3

This chart represents approximate air temperatures based on cooling performance at sea level. From tests carried out to Australian Standard 2913.



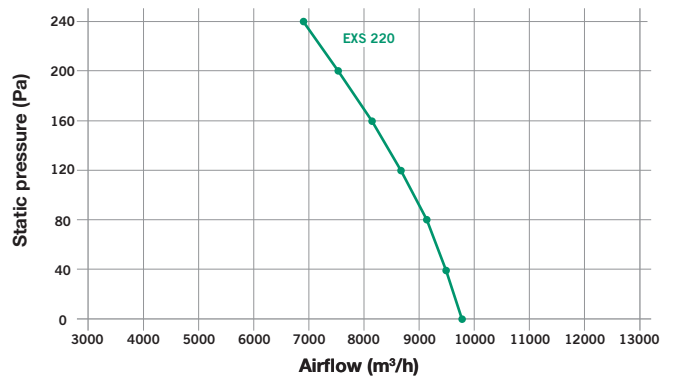
### CABINET DETAILS



Model#	A	B	C	D	E*	F	G	H	I	J	K	L*	M	N	O
EXS 220	860	1160	1160	1108	555	109	38	182	81	274	118	555	834	38	84

Note: All dimensions are in mm. \*Dropper dimensions

### FAN CURVE



Model#	Industry STD Rating m <sup>3</sup> /h @ 80Pa	Motor W	Certified Air Delivery (m <sup>3</sup> /h) (static pressure Pa)						
			0	40	80	120	160	200	240
EXS 220	9140	1500	9790	9500	9140	8680	8140	7560	6910